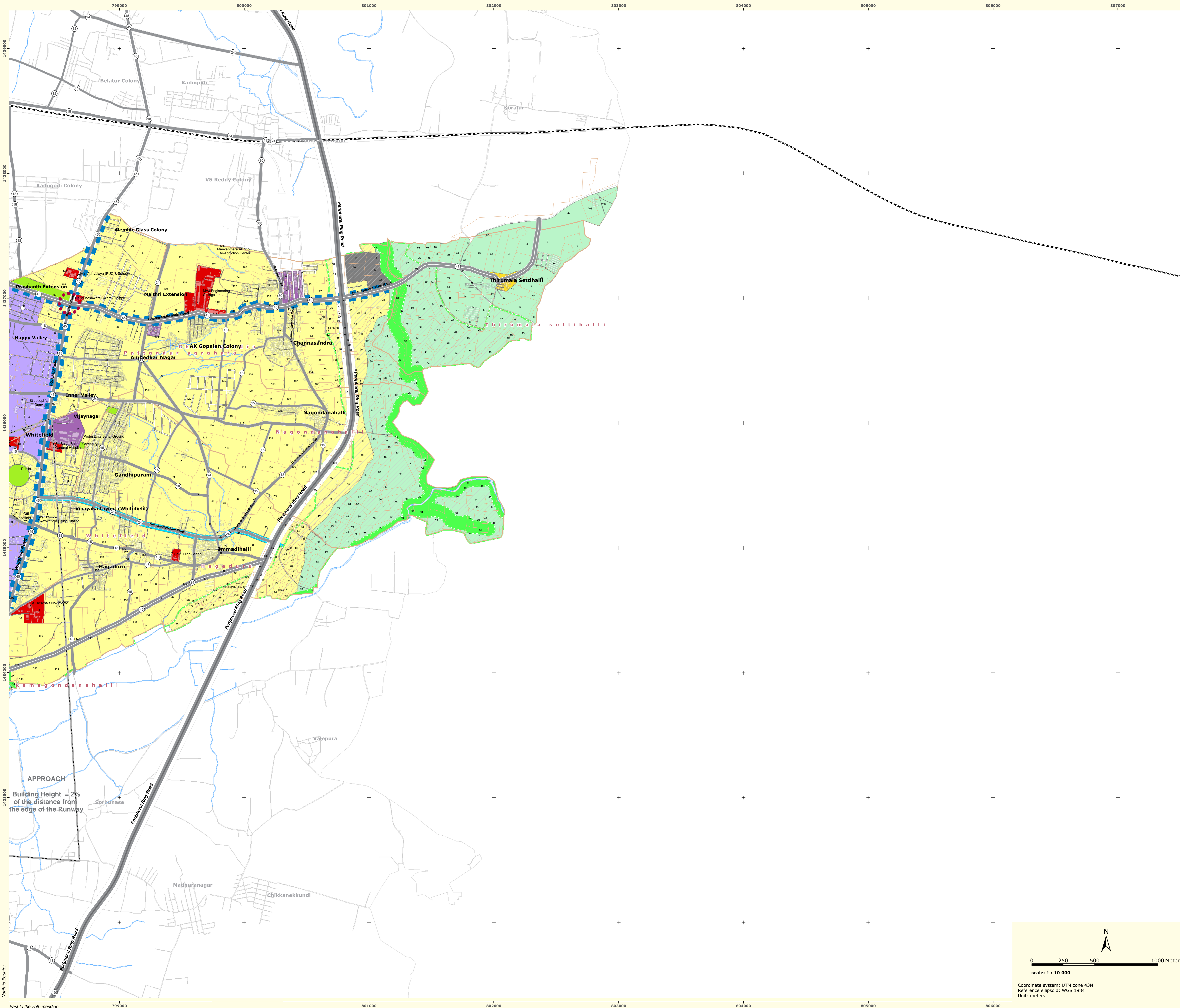
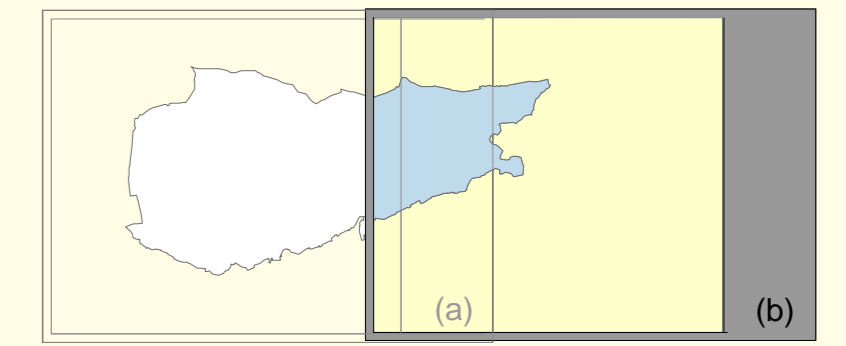
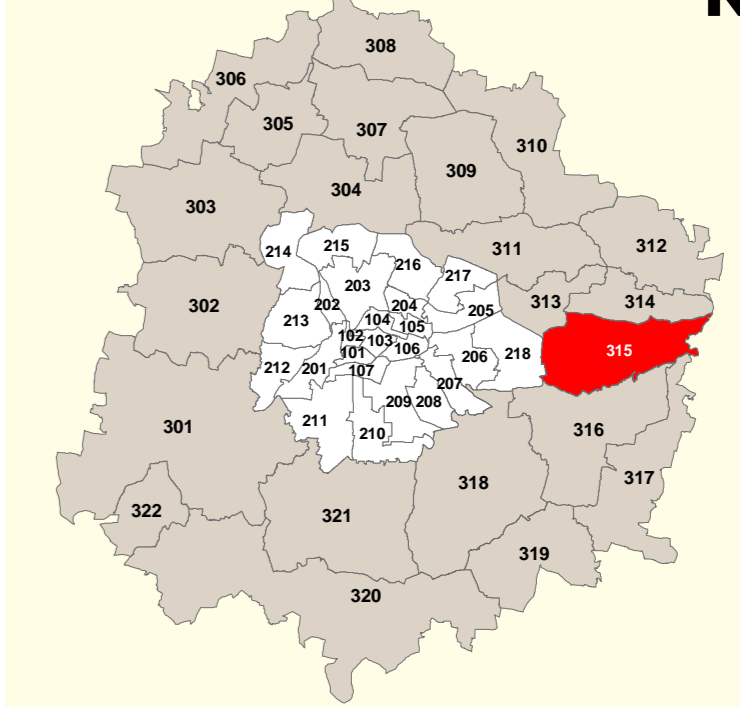


# BANGALORE Revised Master Plan 2015

Proposed Land Use Map

## 3.15 Whitefield

map (b)



### ZONING CLASSIFICATION

#### MAIN ZONES

- Residential**
  - Residential (Mixed)
  - Residential (Main)
- Commercial**
  - Commercial (Central)
  - Commercial (Business)
  - Mutation Corridor
  - Commercial Axes
- Industrial**
  - Industrial
  - High Tech
- Public and Semi-public**
  - Public / Semi-public
- Green (Parks and Open spaces)**
  - State forest
  - Valley
  - Lake / tank
  - Parks and Green Spaces, Sport / Playgrounds, Cemeteries / Burial grounds
- Traffic and Transportation**
  - Road / Rail / Airport Transport
- Public Utilities**
  - Power / Water / Garbage Facility / Treatment Plant
- Agricultural land**
- Unclassified use**

#### Planning Perimeters

- Town Planning Scheme (TPS)
- Coordinated Planning Scheme (CPS)
- Area Improvement Perimeter
- Transport and Utilities Perimeter
- Heritage Conservation zone

#### CONSTRAINT AREA

- Non buildable: High Tension Line (HTL) Pipeline: Oil / Water
- Airport/Heights restrictions

#### OTHER INFORMATIONS

##### Proposed roads hierarchy

- Ring road
- Primary Urban road
- Major Urban road
- Minor Urban road
- Proposed width of roads (in meters)
- Railway line
- Metro Alignment

#### Boundaries

- BDA LPA
- BMP Bangalore Mahanagara Palike
- LPA of BMICAPA
- Village
- Survey number

#### Hydrography

- Drain
- Sensitive Area

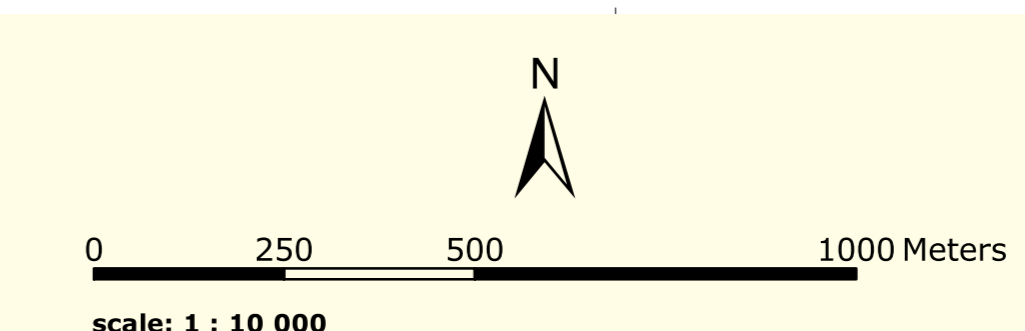
Proposed Land Use Analysis		
Description	Area in Ha.	%
Residential (Main)	1552.96	42.78
Residential (Mixed)	49.23	1.36
Commercial (Central)	-	-
Commercial (Business)	-	-
Mutation Corridor	136.52	3.76
Commercial Axes	11.61	0.32
Industrial	152.21	4.19
High Tech	970.56	26.73
Public and Semi-public	63.84	1.76
Green (Parks & Open Spaces)	120.22	3.31
Traffic and Transportation	456.52	12.57
Public Utilities	21.14	0.58
Unclassified	95.67	2.64
<b>Total</b>	<b>3630.47</b>	<b>100.00</b>



BANGALORE DEVELOPMENT AUTHORITY

Town Planner Member BDA  
 Commissioner BDA  
 Chairman BDA

(space for Govt approval)



Coordinate system: UTM zone 43N  
 Reference ellipsoid: WGS 1984  
 Unit: meters

North to Equator

East to the 75th meridian